



RYDGES

MELBOURNE

CONFERENCE & EVENTS

REFRESHINGLY LOCAL

RYDGES.COM



MORE EVENTS ON EVERY LEVEL

Elevate your events at Rydges Melbourne, home to one of the city's largest and most versatile conference and event facilities. Proud winner of the **"Best Meeting & Events Space of the Year 2024 & 2025"** at the **Victorian Accommodation Awards for Excellence**, earning this honour for two years in a row – and recognised in the Cvent Top 50 Meeting Hotels in Asia Pacific in 2025, as well as the recent **2026 rankings at No.11 in Australia and No.2 in Victoria**, Rydges Melbourne offers a truly exceptional setting for every occasion.

Rydges Melbourne is home to eleven versatile conference and event venues, including the state-of-the-art Centre Stage function room, perfect for elegant weddings or memorable galas, and an expansive Bossley Rooftop overlooking Her Majesty's Theatre.

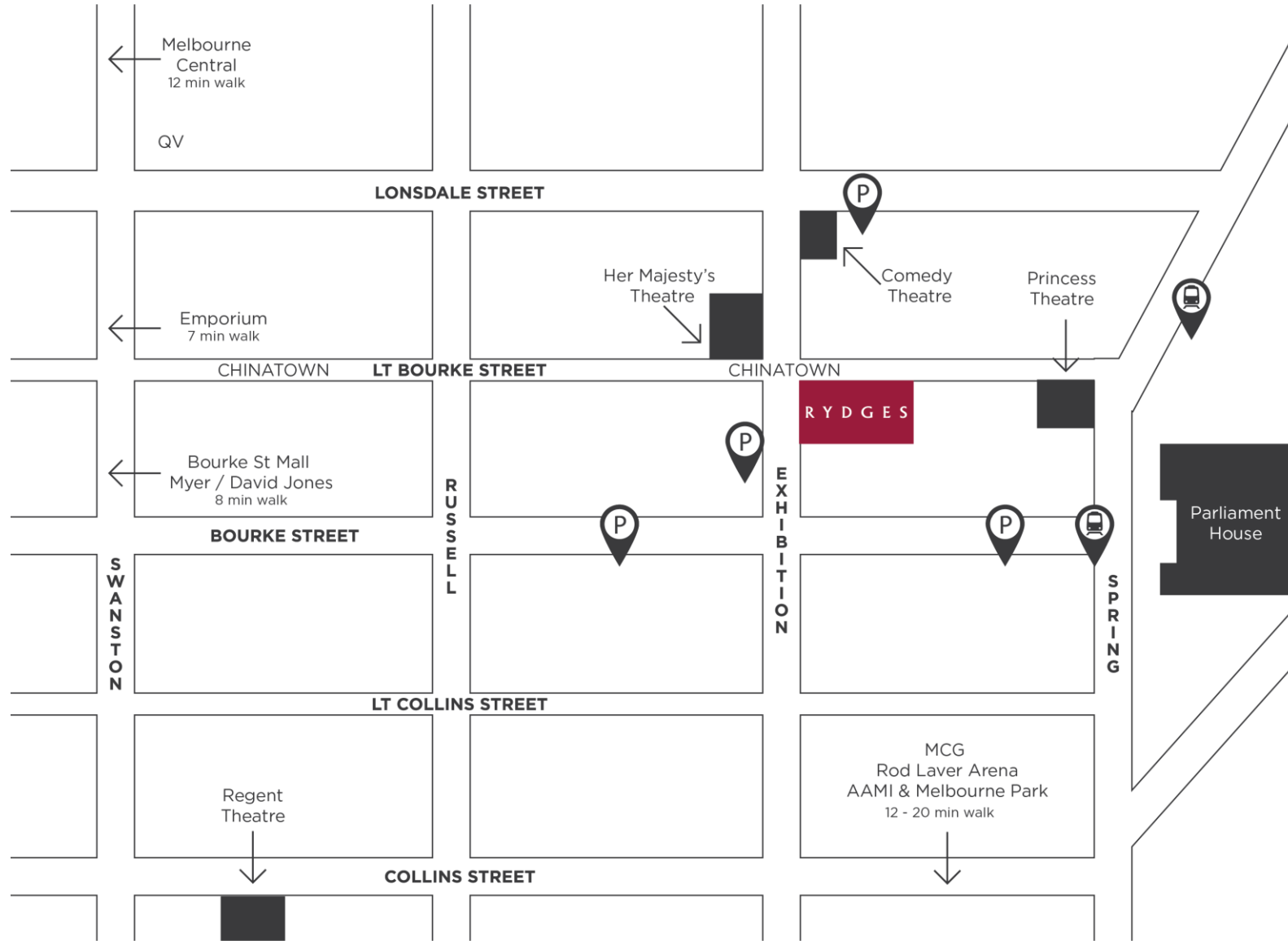
Spanning 1500sqm across two levels, every element of the event spaces have been transformed, with the inclusion of the best-in-market sound, lighting and music systems with endless production possibilities.

Events are elevated with refreshingly local menus to enhance all occasions. Indulge in healthy day delegate packages or feast on elegant banquets featuring local produce, paired with an Australian led beverage list.

Offering 370 rooms & suites that are inspired by the Australian landscape. Enjoy a streamlined check-in, in-room connectivity, an interactive fitness studio, outdoor heated rooftop pool, and Bossley Bar & Restaurant.

Chat to our team of event experts to start planning your next event.

LOCATION



CENTRE STAGE

Whether you're planning a gala dinner, launch, conference, or your wedding – our largest event space is perfect for when you want to take Centre Stage. Start your momentous occasion in glamorous Bobby's pre-function bar, with views overlooking Exhibition Street and Melbourne's theatre district.

With soaring vaulted ceilings, Centre Stage can fit up to 300 guests seated or 500 cocktail and theatre, or it can be divided into two separate areas to suit your event needs.

- 495sqm pillar-less function room
- Private pre-function bar
- 7m x 4m built-in HD LED screen
- 2 x 200 inch retractable HD projector screens
- Built-in surround sound
- Divider wall to create two separate spaces
- Complimentary high-speed Wi-Fi
- Tailored menus using seasonal and local produce

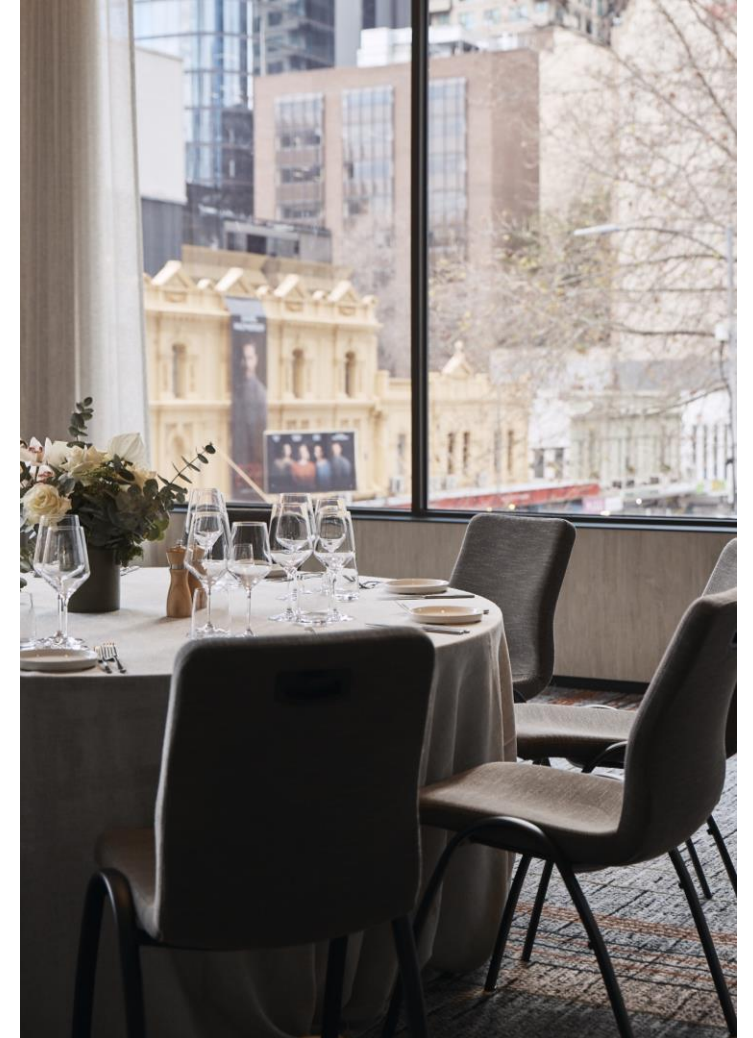


MEETING PLACE

With an abundance of natural light, and overlooking Her Majesty's Theatre, the Meeting Place can host up to 300 guests cocktail or theatre and 220 seated. Meeting Place is fitted with divider walls with the ability to create four private function rooms for any configuration of your choice.

Whether you're hosting a dinner, cocktail party, exhibition or delivering a presentation — the picturesque windows allow abundant natural light and offer a view of Melbourne's theatre precinct and the gateway to Chinatown, the quintessential Melbourne setting.

- 5 x 160 inch retractable built-in HD LED projector screen
- Built-in surround sound
- Divider walls to create four separate venues and multiple configurations
- Complimentary Wi-Fi
- Tailored menus using seasonal and local produce



BOSSLEY ROOFTOP & TERRACE ROOMS

When you're looking for the ultimate Melbourne rooftop experience, look no further. Taking in views of Her Majesty's Theatre and the city skyline, this venue combines all Terrace Rooms and Bossley Rooftop. The expansive indoor-outdoor venue can host 250 guests for cocktail style events, with an awning and heating for those brisk Melbourne nights.

Spanning the full outdoor space, this level two rooftop space is the ideal place to celebrate a special occasion, or for a relaxed setting. There's no event that wouldn't be elevated by this space. With lounge furniture throughout, all surrounded by lush greenery, stunning by day and breathtaking by night — just wait and see.

- Private rooftop with Melbourne skyline views
- Terrace Rooms fitted with divider walls with the ability to create up to three separate private function rooms for more intimate gatherings and fitted with 3 x 75-inch LCD screens
- Bossley Rooftop features a luxurious outdoor bar and mobile bar cart, lounge furniture, umbrellas, lush planter boxes, lighting, outdoor heating and awning.



BOSSLEY PRIVATE DINING

Whether it's for wining or dining, business dinners or big birthdays, working lunches or intimate weddings, anything goes at Bossley. No matter what, you'll feel right at home – and so will your guests.

With two private dining rooms that can be used separately or combined for when bigger is better, Bossley Private Dining offers:

- Start at Lt Bossley's dedicated entrance, where you can usher your guests to a communal table for 14 guests
- Private entrance and bar
- Larger Private Dining Room surrounded by floor-to-ceiling wine cellars for 44 guests
- Presentation-ready TV
- For larger celebrations, Bossley Bar & Restaurant is available for exclusive hire. Chat to our team for more information

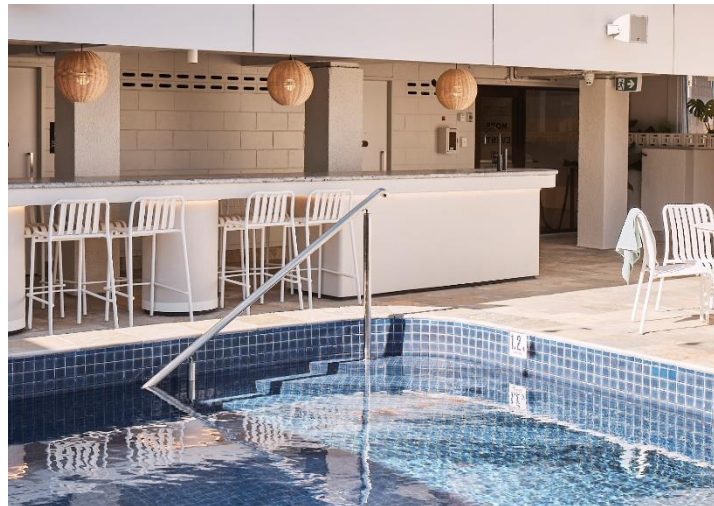


ROOFTOP POOL

A playful and glamorous celebration of our proud 1970's heritage, come up to Level 23 and get poolside. This rooftop pool can be transformed into your own private event space, with sweeping Melbourne city views.

With a luxe cocktail bar fully-equipped for your next celebration, and a delectable grazing station, invite up to 60 guests for a memorable event — it's sure to make a splash.

- Sweeping views of Melbourne city skyline
- Exclusive hire of rooftop heated pool
- Luxurious private bar
- Lounge furniture and umbrellas
- Bluetooth built-in sound system



The Rooftop Pool is an outdoor venue exposed to Melbourne weather. Should the weather not be in favour, we will look to accommodate your group in an indoor venue or postpone to a mutually agreed upon date. Date changes are subject to availability.

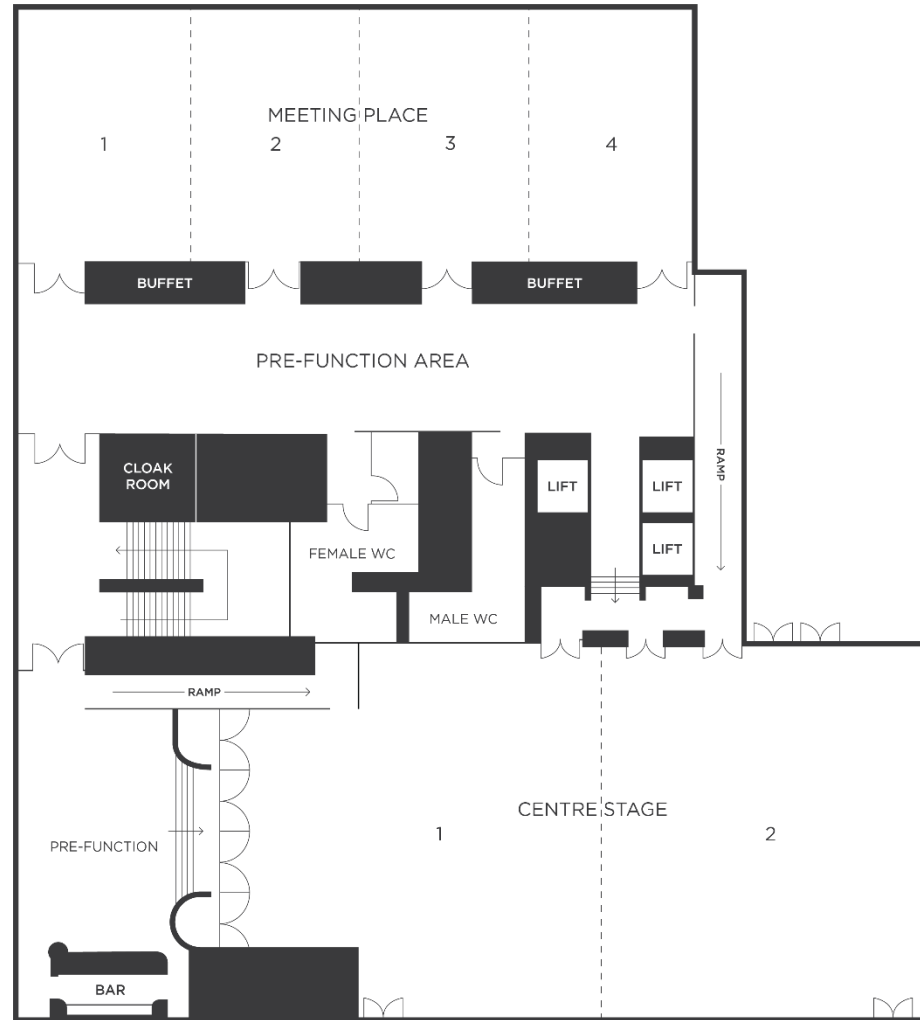
CAPACITIES

	Centre Stage			Meeting Place							Terrace Room						BOSSLEY PDR	ROOFTOP POOL
	CENTRE STAGE	CENTRE STAGE 1	CENTRE STAGE 2	MEETING PLACE	MEETING PLACE 1	MEETING PLACE 2	MEETING PLACE 3	MEETING PLACE 4	MP 1&2, 2&3, 3&4	MP 1,2&3 OR 2,3&4	TERRACE ROOMS	TERRACE ROOM 1	TERRACE ROOM 2	TERRACE ROOM 3	TERRACE ROOM 1&2	TERRACE ROOMS + BOSSLEY ROOFTOP		
	LEVEL 1			LEVEL 1							LEVEL 2						GROUND	LEVEL 23
AREA M ²	495	-	-	332	83	83	83	83	166	249	143	57	43	43	100	460	-	-
THEATRE	500	189	204	286	84	84	84	84	144	216	100	30	28	28	66	-	40	-
CLASSROOM	162	60	78	120	30	30	30	30	60	90	-	21	21	21	55	-	20	-
U-SHAPE	40	28	30	38	20	20	20	20	22	30	-	17	13	13	-	-	13	-
CABARET	248	104	120	176	40	40	40	40	88	136	-	21	14	14	-	-	-	-
BOARDROOM	42	20	20	-	16	16	16	16	-	-	-	22	20	20	36	-	20	-
BANQUET	300	120	140	220	50	50	50	50	100	150	-	21	14	14	42	-	40	-
BANQUET W/ DANCEFLOOR	250	-	-	160	-	-	-	-	-	-	-	-	-	-	-	-	-	-
COCKTAIL	500	250	250	300	80	80	80	80	140	200	130	50	40	40	60	250	60	60
EXHIBITION	33	*	*	22	*	*	*	*	*	*	-	-	-	-	-	-	-	-

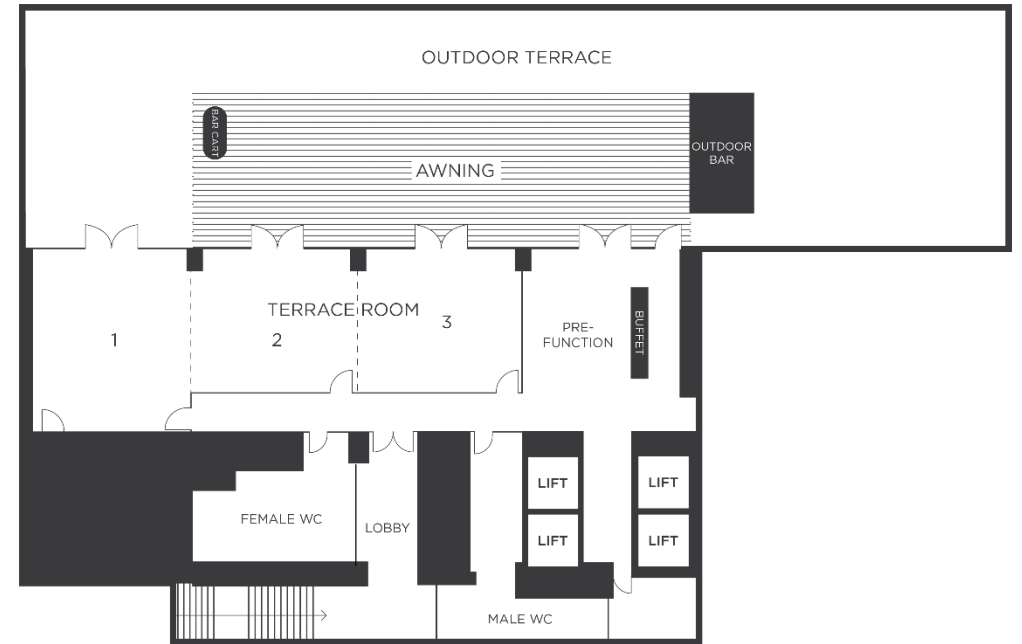
* Discuss with our Sales Team for the best exhibition configuration

FLOORPLAN

Level One

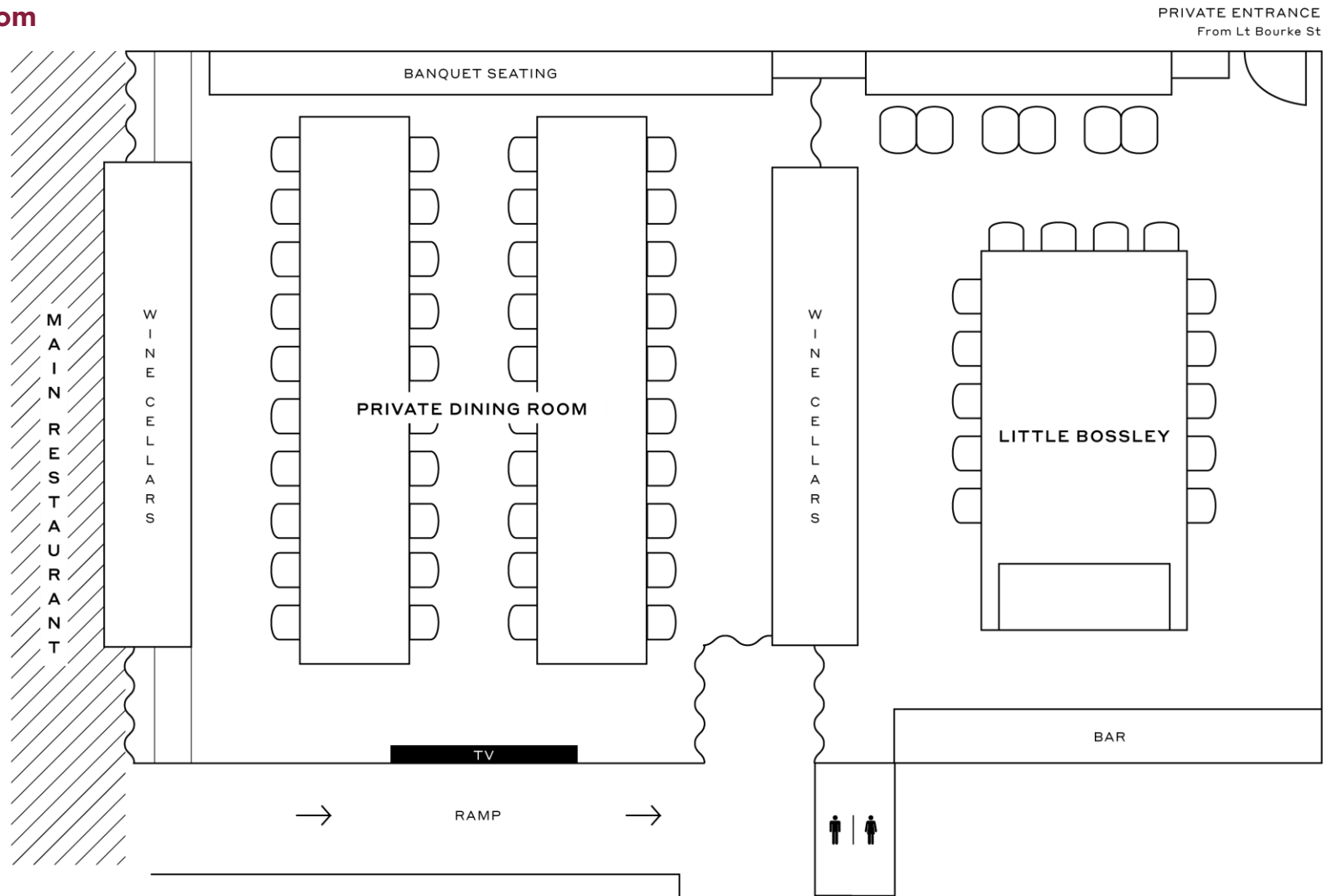


Level Two



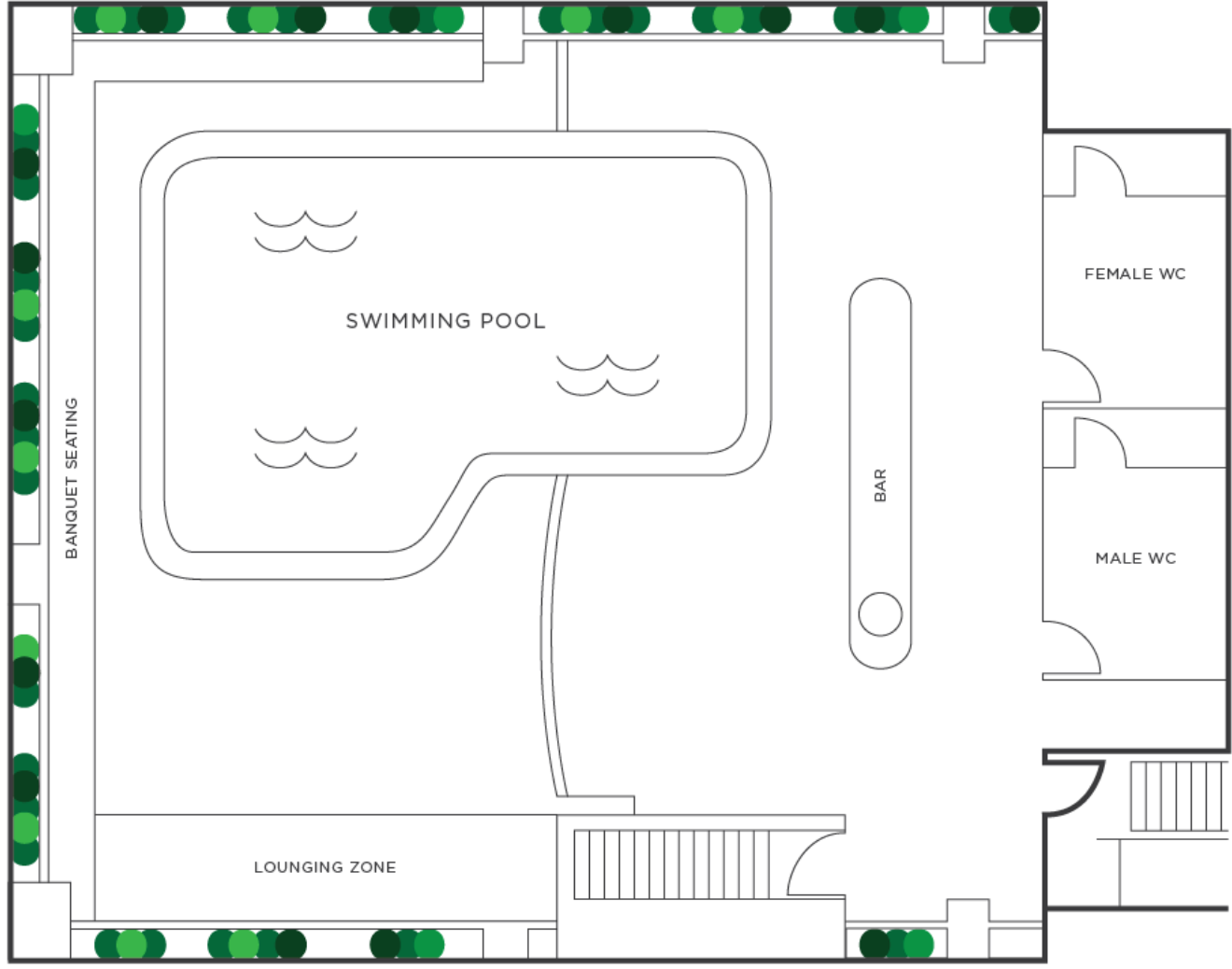
FLOORPLAN

Bossley Private Dining Room



FLOORPLAN

Rooftop Pool



EXPERIENCE RYDGES MELBOURNE

Hotel Features

Refreshingly local in design, the modern rooms create a welcoming and serene environment inspired by the Australian landscape, offering two different accommodation types including king rooms and suites. Rydges Melbourne features a streamlined check-in, in-room connectivity, interactive fitness studio, outdoor heated rooftop pool and Bossley Bar & Restaurant.

- Conveniently located in the heart of Melbourne CBD – theatre district, iconic dining, Chinatown, exclusive Collins St boutiques, major sporting precincts and entertainment at your doorstep
- 370 guest King Rooms and Suites
- Seamless and connected check-in experience
- Heated outdoor pool on the rooftop
- Interactive fitness studio and outdoor terrace
- Bossley Bar & Restaurant
- 24 hour in-room dining
- Working spaces in the lobby
- Complimentary high-speed Wi-Fi





RYDGES

HOTELS · RESORTS

RYDGES MELBOURNE

186 Exhibition Street,
Melbourne, VIC 3000

ENQUIRIES

+61 3 9635 1286

functions_rydgesmelbourne@evt.com

REFRESHINGLY LOCAL

RYDGES.COM